

HOW TO USE

1. Insert the electrical wire plug into single-phase three-line sockets of power supply cord.
2. Before start, please turn the knob anticlockwise to the minimum location. Turn on the switch, the power light will be on. It is ready for cutting after adjusting the knob slowly to needed working temperature. Please pay attention to separate materials at once while cutting.
3. Current adjustment depends on target materials. Different materials apply different power. Bigger power, quicker speed, shorter life. Please apply the suitable temperature.

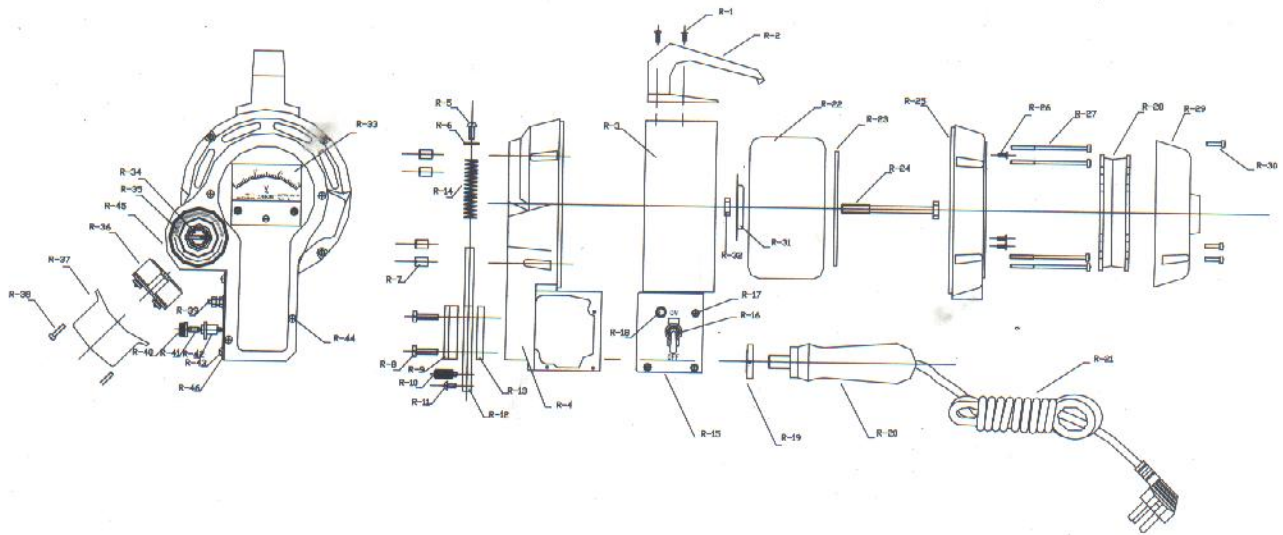
四.注意事项

- 1、裁剪推进速度不能过快，太快时电热丝碰及立柱引起短路，造成机器烧坏。
- 2、机器不用时请勿放在潮湿环境中，以免电气部位绝缘性能降低。
- 3、本机电源为单相三线安全插头，电源插座接地线必须可靠接地，以保证安全。

NOTIFICATION

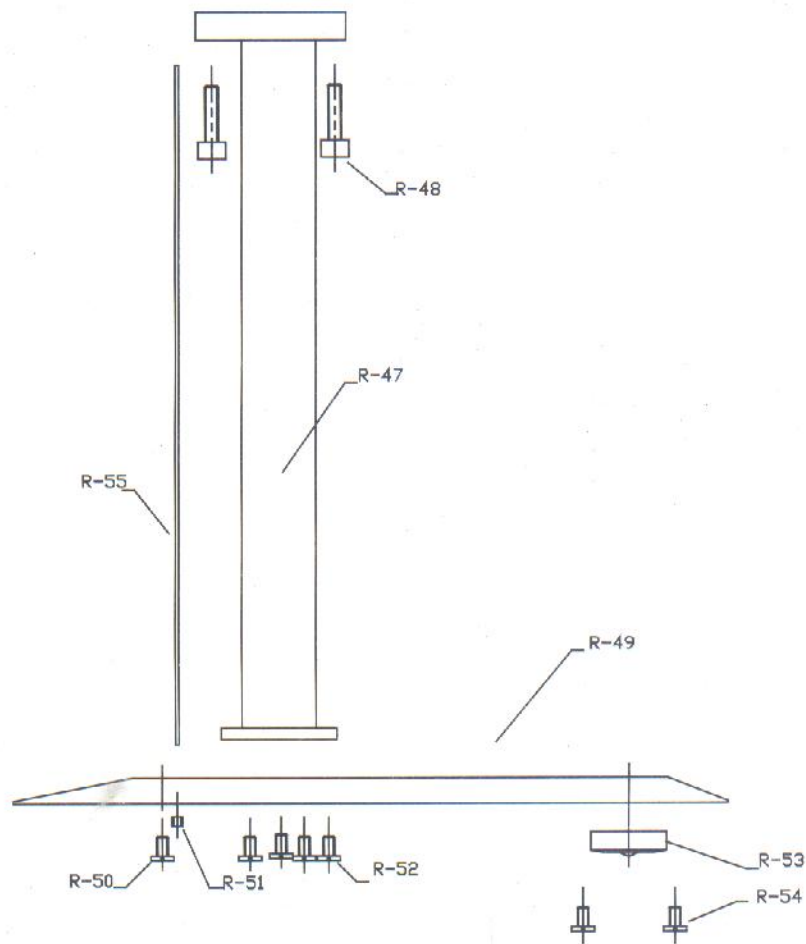
1. The advance speed ought to be moderate. Rapid speed will cause heating wire touch post. It causes short circuit. The machine will be damaged.
2. Please keep the machine in dry circumstances to protect the machine from insulativity receding.
3. The machine is with single-phase three-line plug.. Please make sure the ground of socket earthed well for safety.

一.机头部分 HEAD



序号 NO	代号 CODENAME	名称	DESCRIPTION	数量 PC(S)	备注 REMARK
1	R-1	提手螺丝	SCREW	4	M4*12
2	R-2	提手	HANDLE	1	
3	R-3	中罩	MIDDLE COVER	1	
4	R-4	前端盖	FORMER COVER	1	
5	R-5	拉杆导线螺钉	BOLT	1	
6	R-6	拉杆导线垫片	GASKET	1	
7	R-7	中罩螺母	NUT	4	
8	R-8	拉杆固定螺钉	BOLT	4	M5*22
9	R-9	拉杆固定板	LEDGER PLATE	1	
10	R-10	拉手	HANDLE	1	
11	R-11	电热丝固定螺丝	BOLT	1	M4*5

二. 底板部分 SOLEPLATE



序号 NO	代号 CODENAME	名称	DESCRIPTION	数量 PC(S)	备注 REMARK
47	R-47	立柱	POST	1	16 22 28
48	R-48	内六角螺钉	SOCKET HEAD SCREW	4	M6*20
49	R-49	底板	TEMPLET	1	
50	R-50	沉头螺钉	SUNK SCREW	1	M3*6
51	R-51	磁珠	MAGNETIC BEAD	1	
52	R-52	立柱圆头螺钉	ROUND HEAD SCREW	4	M5*10
53	R-53	橡胶座组件	RUBBER BASE ASSEMBLY	4	
54	R-54	底板螺丝	BOLT	8	9/64*32
55	R-55	电热丝	FUSE	1	

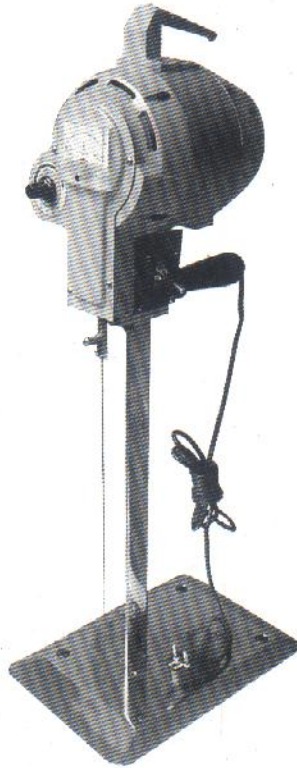
附件清单 ATTACHMENT

序号 NO	代号 CODENAME	名称	DESCRIPTION	数量 PC(S)	备注 REMARK
1	1	电热丝	FUSE	1	
2	2	保险丝管	CARTRIDGE FUSE	2	
3	3	两用螺丝刀	SCREWDRIVER	1	

序号 NO	代号 CODENAME	名称	DESCRIPTION	数量 PC(S)	备注 REMARK
12	R-12	拉杆	TENSION ROD	1	
13	R-13	垫木	TEMPLET	1	
14	R-14	拉杆弹簧	SPRING	1	
15	R-15	开关盖	SWITCH BOX	1	
16	R-16	开关	SWITCH	1	
17	R-17	开关盖螺钉	BOLT	3	M3*5
18	R-18	电源指示灯	POWER LIGHT	1	
19	R-19	手柄锁紧螺母	NUT	1	
20	R-20	胶木手柄	HANDLE	1	
21	R-21	电源线(黑三扁)	WIRE	1	
22	R-22	定子	STATOR	1	
23	R-23	三角板	KNEE PLATE	1	
24	R-24	线圈螺钉	BLOT	1	M8*100
25	R-25	后端盖	BACKWARD COVER	1	
26	R-26	沉头螺钉	SUNK SCREW	3	M3*10
27	R-27	中罩螺钉	BOLT	4	M4*85
28	R-28	风机	BLOWER	1	
29	R-29	风机盖	BLOWER COVER	1	
30	R-30	风轮盖螺丝	BOLT	3	M3*15
31	R-31	碗型压板	BOWL PRESSURE PAD	2	
32	R-32	螺母	NUT	1	M8
33	R-33	电压表	VOLTMETER	1	
34	R-34	电位器	REGULATION RESISTANCE	1	470K
35	R-35	指示表盘	DIAL GAUGE	1	
36	R-36	固态继电器	SOLID RELAY	1	
37	R-37	模块罩	COVER	1	
38	R-38	模块罩螺钉	BOLT	4	M3*5
39	R-39	带锁电位器	LOCK REGULATION RESISTANCE	1	100K
42	R-42	保险丝匣	FUSE BOX	1	
43	R-43	螺钉	BOLT	3	M3*5
44	R-44	前面板固定螺钉	BOLT	4	M5*8
45	R-45	电位器固定板	REGULATION RESISTANCE LEDGER PLATE	1	
46	R-46	保险丝匣盖	FUSE BOX COVER	1	

DRJ-A200 电热裁剪机使用说明书

ELECTRIC HEATED SCISSORS INSTRUCTION



一. 技术指标 TECHNICAL DATA

初级电压 PRIMARY VOLTAGE	次级电压 SECONDARY VOLTAGE	频率 FREQUENCY	电流范围 ELECTRIC RANGE	裁剪高度 CUTTING HEIGHT	功率 POWER
220V	0-30V	50-60HZ	0-20A	18"24"30"	550W

二.用途与特点

- 1、本机是裁剪化纤棉的理想工具，具有速度快，截面光滑.平整.重量轻.用电省.操作方便等优点。
- 2、对不同的裁剪物料，用电压表显示次级电压调整的大小，以控制电热丝温度，达到最佳裁剪效果。

APPLICATION AND FEATURE

1. It is an indispensable cutting tool for fiber cotton and sponge production words. It is with high speed, evenly trim, saving electricity and easy operation.
2. It can work out the best result of cutting different materials through controlling the temperature of heating wire by adjusting secondary voltage with voltage meter.

三.使用方法

- 1、将机上电线插头，插入电源线单相三线插座内。
- 2、开机前，将温度调节旋钮逆时针旋至最小位置，打开电源开关。电源指示灯亮，此时缓缓调节温度控制钮达到所需电热丝工作温度，即可进行裁剪，裁剪时。适时将剪料分开，以便于裁剪。
- 3、电压调节要根据材料，电压大.裁剪速度快，但电热丝容易拉长，影响电热丝使用寿命，故电压调节要适中。